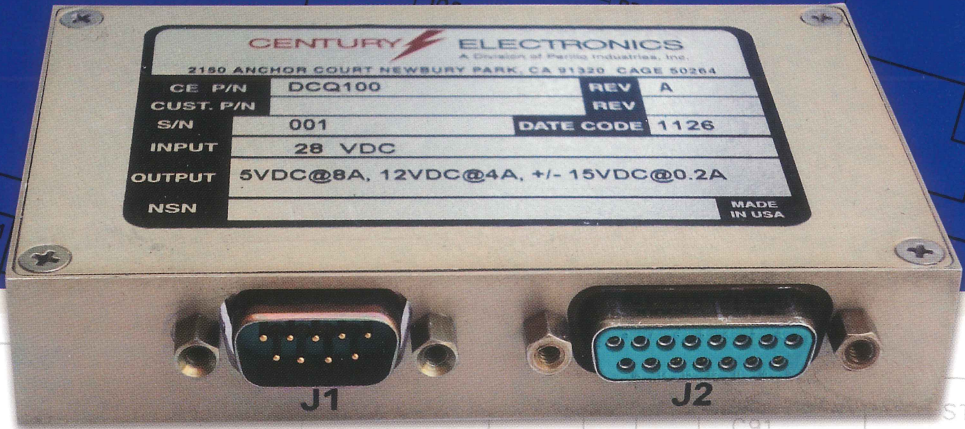


DCQ 100 SERIES

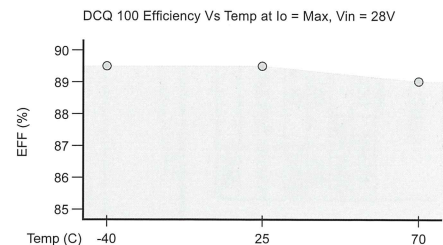
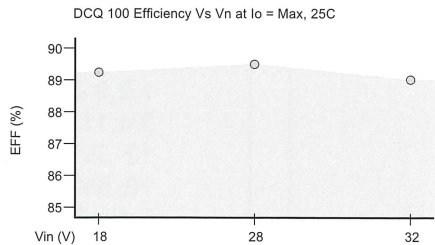
QUAD OUTPUT DC TO DC CONVERTORS
UP TO 100 WATTS



PRODUCT FEATURES

- High Power Density (for Quad Output) 14W/cu.in
- Built-in EMI Filter
- Four Outputs up to 100Watts total
- Input/Output "D" Connectors
- Input/Output Isolation
- Repairable (non encapsulated)
- Component Derating per Navso P-3641A
- Input Transients 50V (MIL-STD-704D)
- Shielded on all six sides

Our standard designs can be modified to meet exact customer specifications



CENTURY  **ELECTRONICS**
A Division of Perillo Industries, Inc.
(An AS9100 Certified Company)

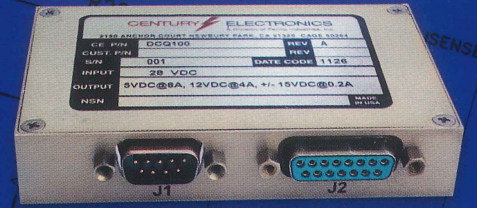
AC/DC POWER SUPPLIES | DC/DC CONVERTERS

2150 Anchor Court | Newbury Park, CA 91320 | Tel: 805.498.9838 | Fax: 805.498.9452 | www.centuryele.com



DCQ 100 SERIES

QUAD OUTPUT DC TO DC CONVERTORS
UP TO 100 WATTS



PRODUCT SPECIFICATIONS

All specifications subject to change

DC Input:

- ▣ 18 – 32VDC
- ▣ Input Transients: 50V (MIL-STD-704D)
- ▣ EMI Input Filter Built-in
- ▣ Inrush Current Limit: 10A

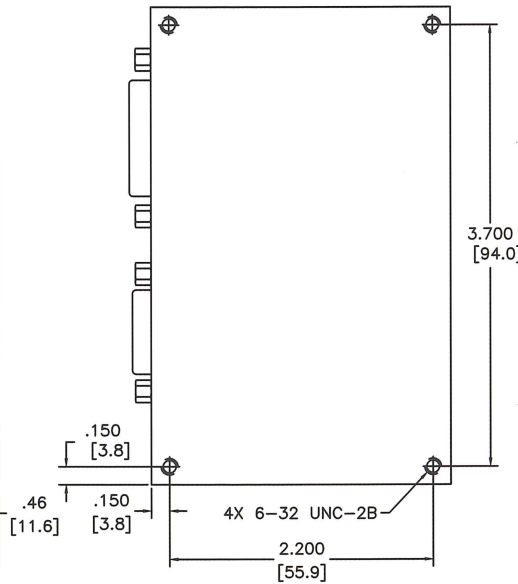
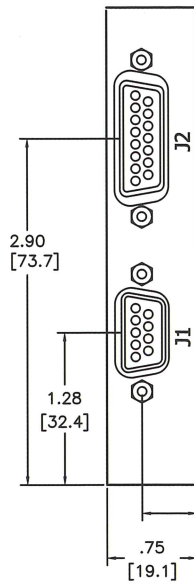
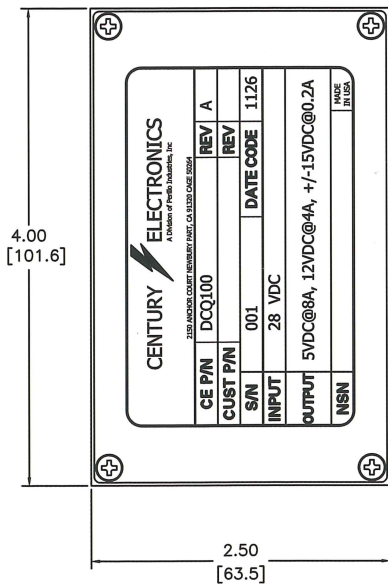
Mechanical:

- ▣ Weight: 0.5 lbs. (227 gms)
- ▣ All dimensions in inches [mm]

DC Output:

- ▣ Output Voltages*: 5VDC @ 8A, 12VDC @ 4A, +/- 15VDC @ 0.2A
- ▣ Ripple & Noise: 1% p-p
- ▣ Overcurrent Protection: 120%
- ▣ Ambient Operating Temperature Range: -40°C to 70°C (-54°C to 71°C available)
- ▣ Short Circuit Protection Auto Recovery
- ▣ Isolation: Input to Chassis to Outputs 100M Ohm
- ▣ Line, Load and Temperature Regulation: 1%

* Consult factory for different output voltages



Pin Out J1

- 1,2 Input
- 3 Safety Ground
- 4 Sync
- 5 Sync Rtn
- 6,7 Input Rtn
- 8 Inhibit
- 9 Inhibit Rtn

J2

- 1,2,9 5V Output Rtn
- 3,4,11 5V Output
- 12 5V Sense
- 10 5V Sense Rtn
- 5,13 12V Output
- 6,14 12V Output Rtn
- 7 +15V Output
- 8 -15V Output
- 15 +/-15V Output Rtn